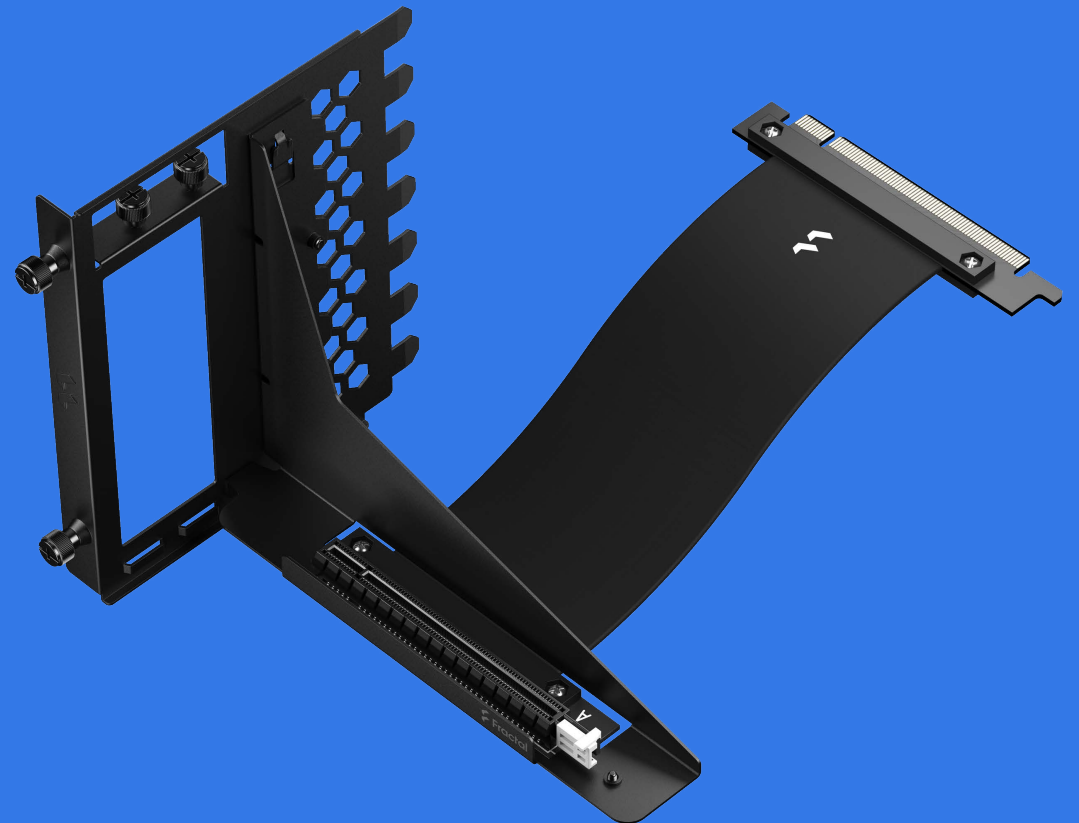


# Product Sheet

## Flex B-20



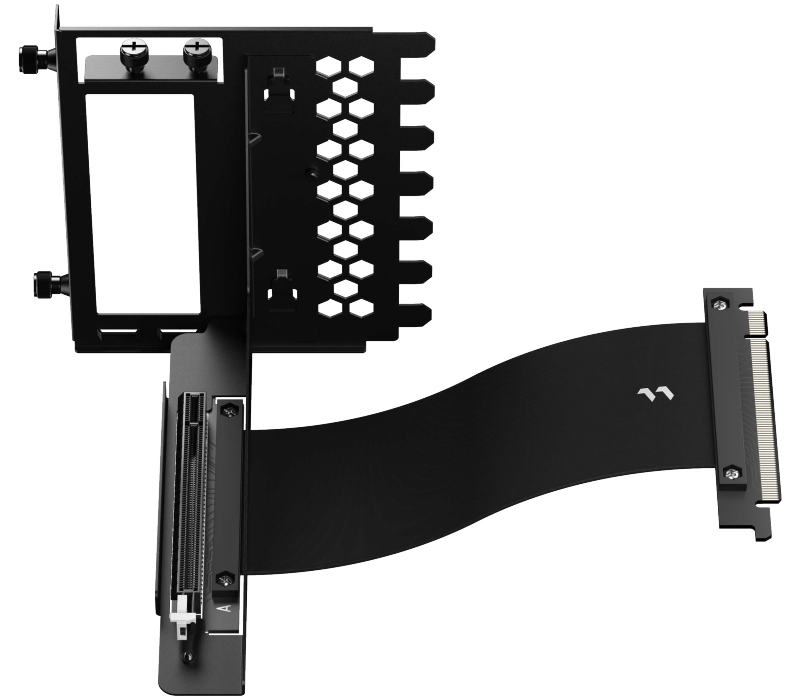
# Index

- 3 Overview**
- 4 Key features  
Specifications**
- 5 Package contents  
Additional information**

# Flex B-20

## The Rise of the GPU

The Flex B-20 bracket is a great supplement to your case, allowing you to mount your GPU vertically. This makes Flex B-20 an attractive companion to select Fractal cases like the Define 7 and the Define 7 XL.



# Key features

- Fits ATX cases with bridgeless expansion slot covers (no bars between slots), such as the Define 7, the Define 7 XL and many others
- Supports full-length GPUs with single or dual-slot brackets and coolers of any size
- Places the GPU away from the side panel
- Mounts easily with included captive thumbscrews
- Full PCIe 3.0 x16 support offering uncompromised performance
- Heavy-duty double-sided wiring delivers up to 3x the power of traditional riser cables (auxiliary power connections are recommended for devices over 40W TDP)

# Specifications

GPU support	• Any PCIe compatible card with single or dual-slot bracket (no maximum cooler height)
Case requirements	• 7 available bridgeless expansion slots (no bars between slots when covers are removed)
Captive thumbscrews	• Two, for installation of the riser into the case
PCIe standard	• PCIe Gen 3.0 x16*
Cable length	• 200 mm
Cable width	• 57 mm
Cable color	• Matte Black
Bracket color	• Black powder coated steel
Product dimensions (LxWxH)	• 182 x 134 x 145 mm
Dimensions w/o protrusions/screws	• 182 x 125 x 145 mm
Net weight	• 248 g
Package dimensions (LxWxH)	• 230 x 168 x 56 mm
Package weight	• 360 g
Warranty	• 2 years

\* If you wish to use the Flex B-20 PCIe 3.0 riser cable together with a PCIe 4.0 compatible motherboard and graphics card, make sure you first set the PCIe Slot Configuration in your motherboard BIOS or UEFI to PCIe Gen3 for best system stability.

# Package contents

- Vertical GPU bracket with 2 x captive thumbscrews
- PCIe Riser cable 200 mm
- 2x (M3) screws (for riser cable)
- 2x (6-32) thumbscrews (for GPU)
- 2x (6-32\*5 mm) screws (to mount brackets together)
- User manual

# Additional information

Product	SKU	EAN	UPC	JAN
Flex B-20	FD-A-FLX1-001	7340172702689	843276102685	4537694280112